

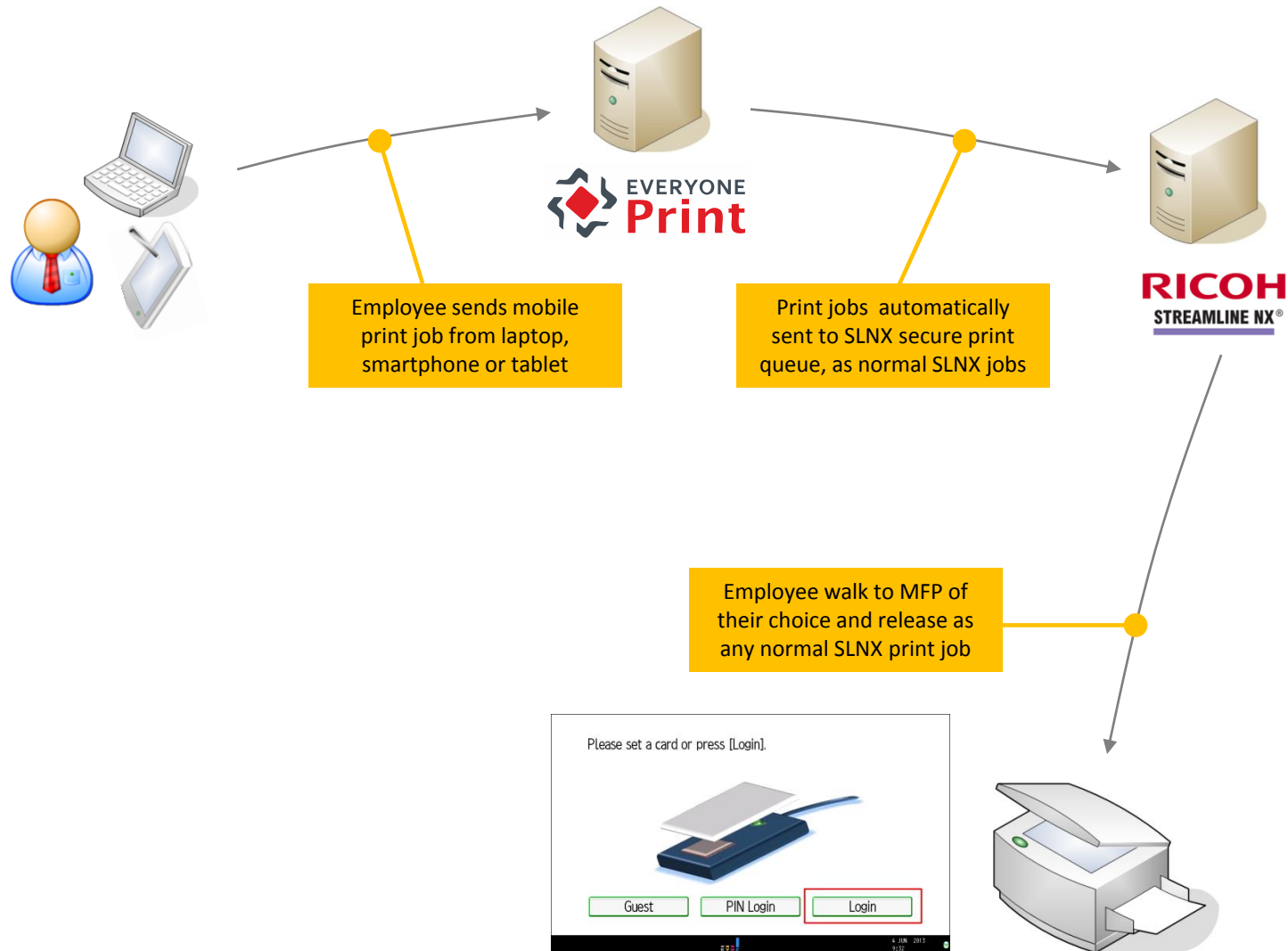


EveryonePrint and Ricoh Streamline NX Integration Overview

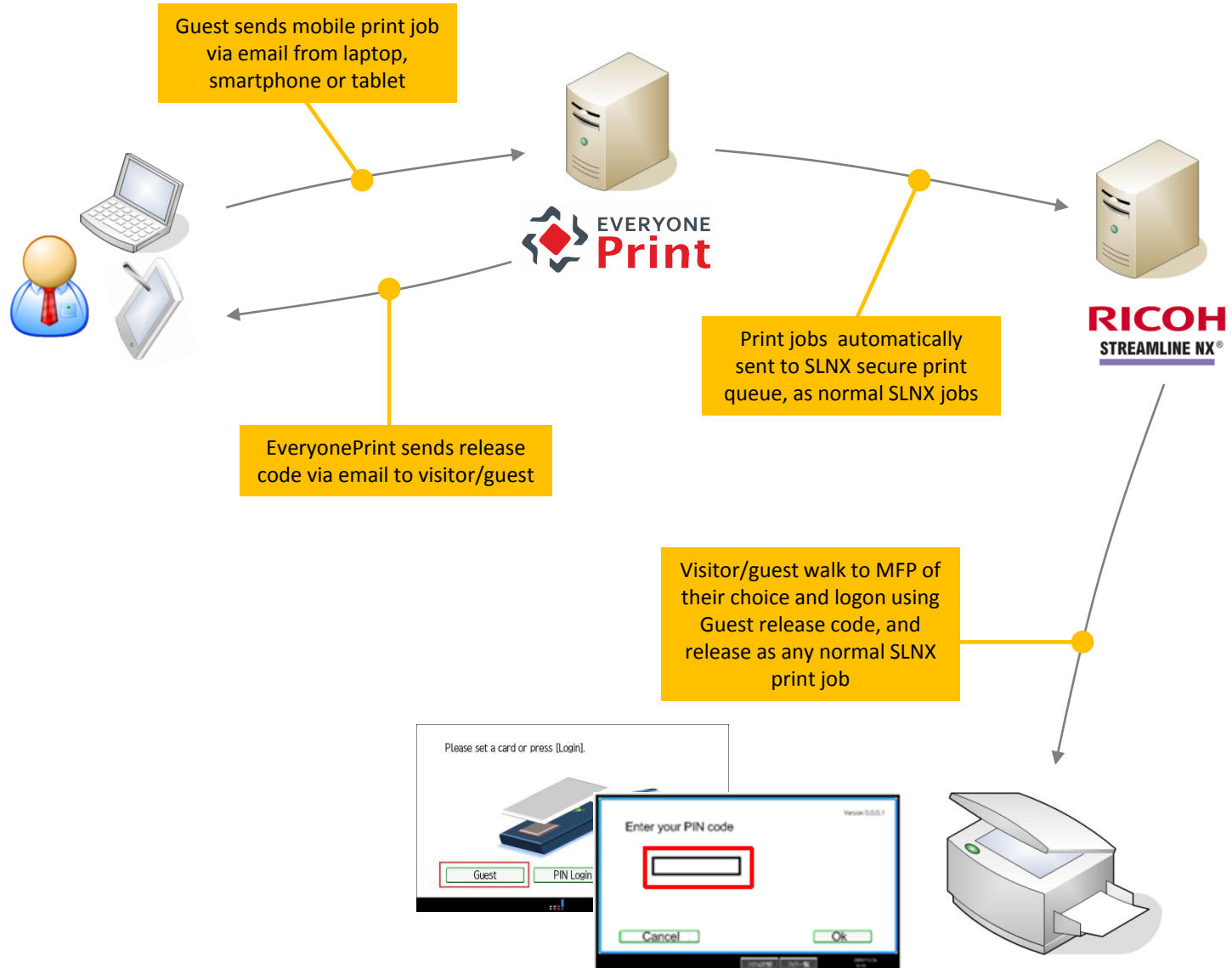
Overview

- The ability for mobile users within an organization and visiting guests to be able to print via email from mobile devices on any Streamline NX controlled MFDs.

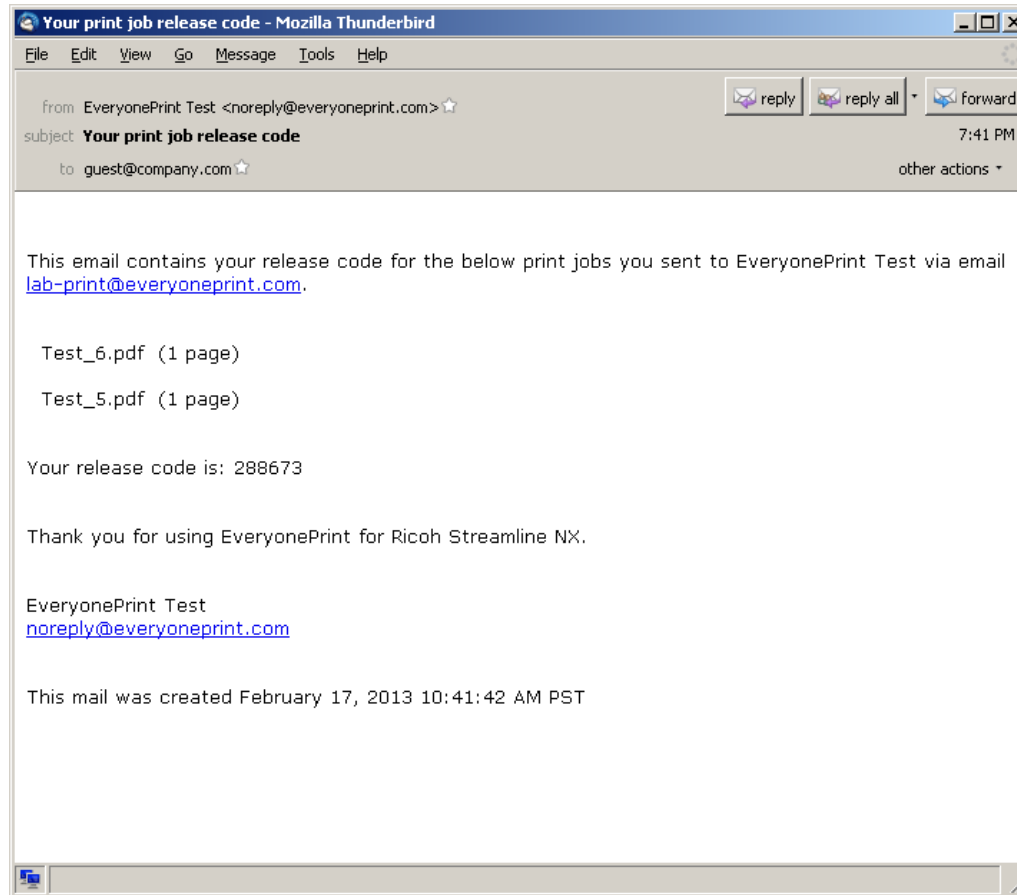
1. Employee Mobile Print



2. Visitor/Guest Mobile Print



Sample email to visitors



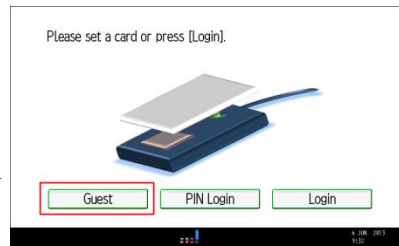
SLNX screen flow for guests

Login as guest user who is registered in AAM-S. (Guest printing user is a same user as guest copy user of hidden function)

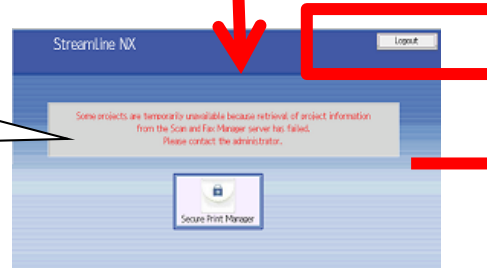
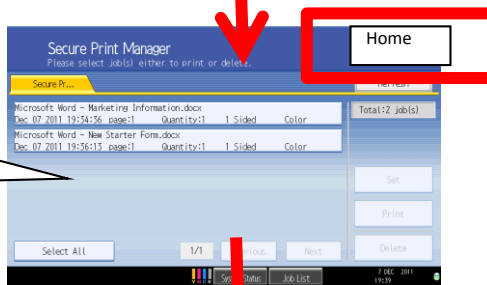
Enter PIN code that is in return e-mail from EveryonePrint

Select jobs and print them same as usual SLNX printing. After printing, push "Home" button

Push "Logout" button, then screen will move to Login screen



Authentication



* After login, if Guest user has access rights to MFP standard applications, Guest can use the application's screen by pushing Hardware key.

How to enable in Streamline NX?

1. In Ricoh internal system open LocalCustomizations to get:
“A2013-04 SLNX HotSpot Integration”

How to enable in EveryonePrint

1. In the root directory of the EveryonePrint installation, open the file eop.xml in a text editor such as Notepad
2. Find the entry `<edition>` and change this to `<edition>waccount</edition>`
3. Find entry `<editionacct>` and change this to `<editionacct>slnx</editionacct>`

```
url>http://127.0.0.1:631</ippprinturl><ippprintenabled>>false</ippprintena  
rverport><edition>waccount</edition><editionacct>slnx</editionacct><mailse  
wunknowndirectories><ippprinturl>http://127.0.0.1:631</ippprinturl></ippprinturl></tr>
```

4. Save the eop.xml file
5. Restart EveryonePrint Web service

How to enable in EveryonePrint?

1. In EveryonePrint Admin, choose “Ricoh Streamline NX”

EveryonePrint Edition Configuration

Choose the configuration below which is most relevant for this installation. Depending on the selection below, different features will be enabled.

EveryonePrint Secure – Standalone EveryonePrint is installed standalone without a print accounting solution

EveryonePrint Connect – Add-on to accounting EveryonePrint is installed as an add-on to a print accounting or print management solution

Choose the print accounting solution to enable specific additional features:

Ricoh Streamline NX document management

Other print accounting solution

2. Under Email Print, choose “Unknown senders are guests”

Email Authentication

Lookup Email Addresses

Search LDAP for email address to lookup username

For email address lookup in LDAP, LDAP settings must be successfully configured under [User Authentication](#).

Unknown Senders

Choose how EveryonePrint for Ricoh Streamline NX will handle email from unknown senders.

Do nothing, email from unknown senders are discarded

Allow user self registration

Unknown senders are guests, send email with release code